

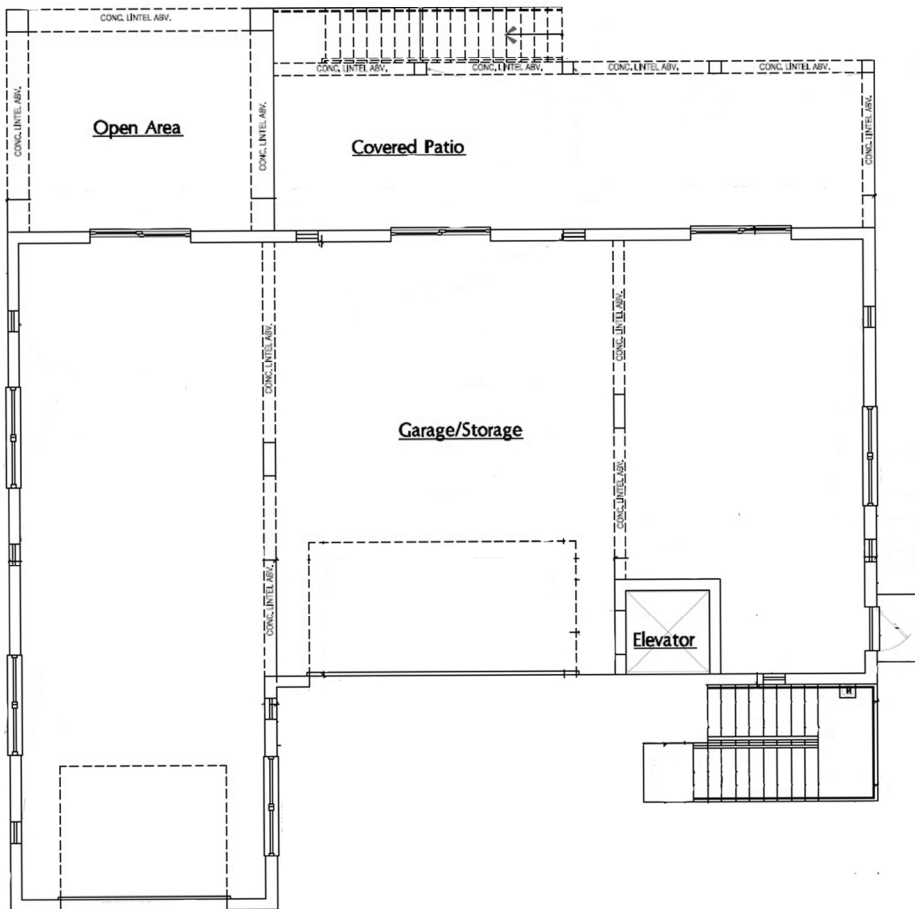
PORTOFINO

SINGLE FAMILY HOME
1,848 SQ.FT.

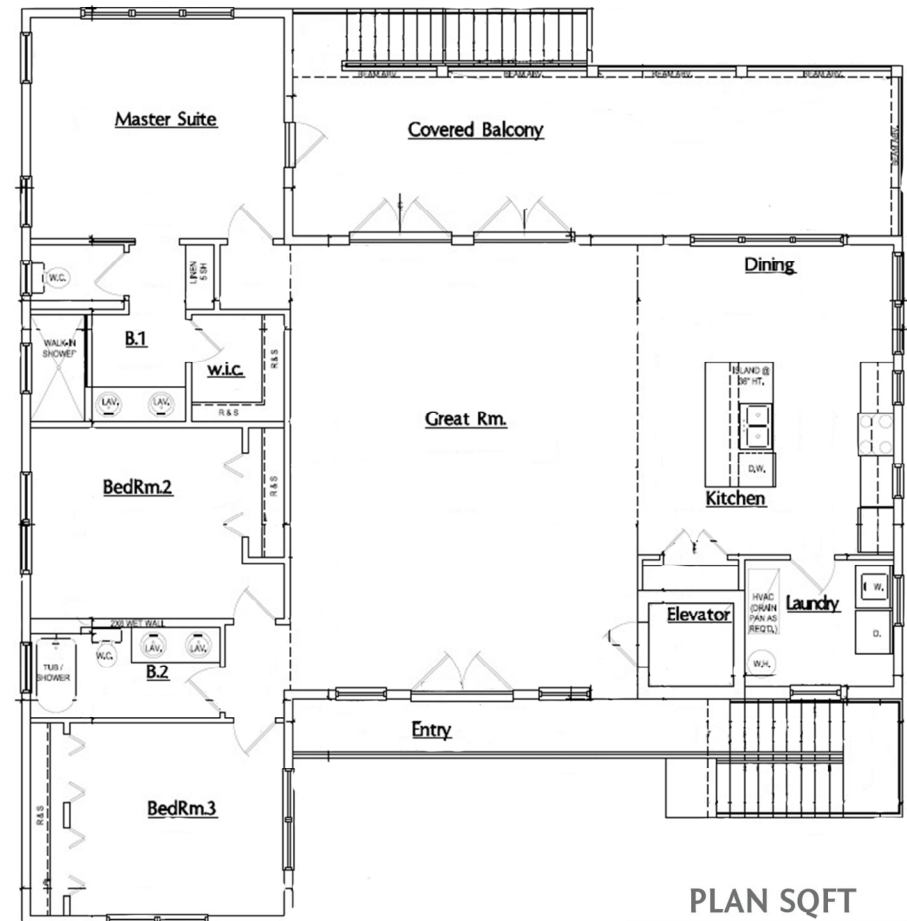


Artist's conceptual rendering. Actual construction may vary in color, features and dimensions. Availability, specifications, and pricing are subject to change without notice. All plans require municipality approval and may be modified in order to comply with all developer requirements. Please inquire with a WinWay Homes representative about custom floorplan options available on this home. © 2025 WinWay Homes. CBC #1267276. All Rights Reserved. Not an offer to purchase where prohibited by law. Broker Participation Welcome.

GROUND FLOOR PLAN



SECOND FLOOR PLAN



PLAN SQFT

TOTAL LIVING 1,848	
1ST FLOOR	1,848
COVERED ENTRY	90
COVERED PATIO	360
GARAGE/ STORAGE	1,635
OPEN AREA	213
COVERED BALCONY	360