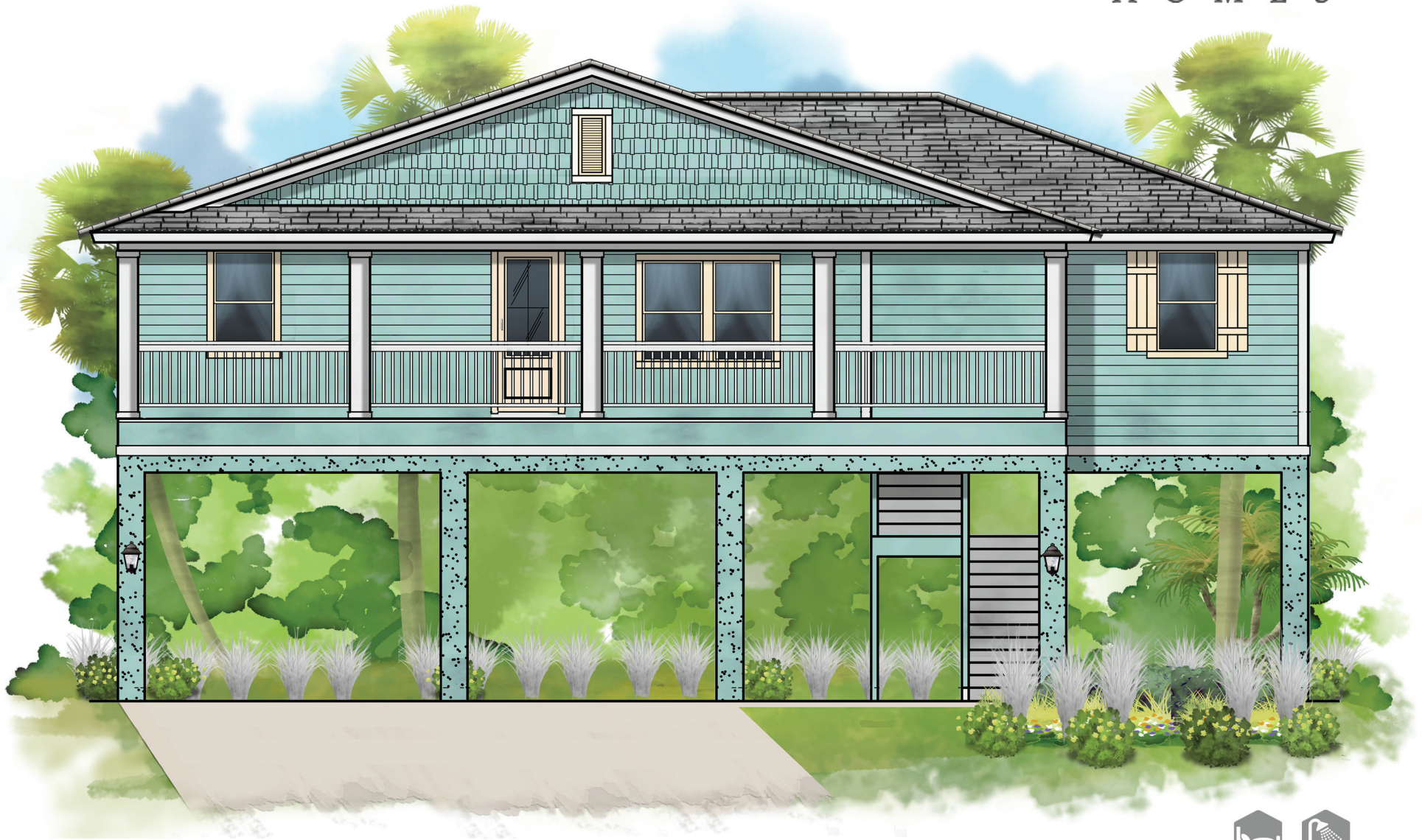


SABAL

SINGLE FAMILY HOME
2,230 SQ.FT.

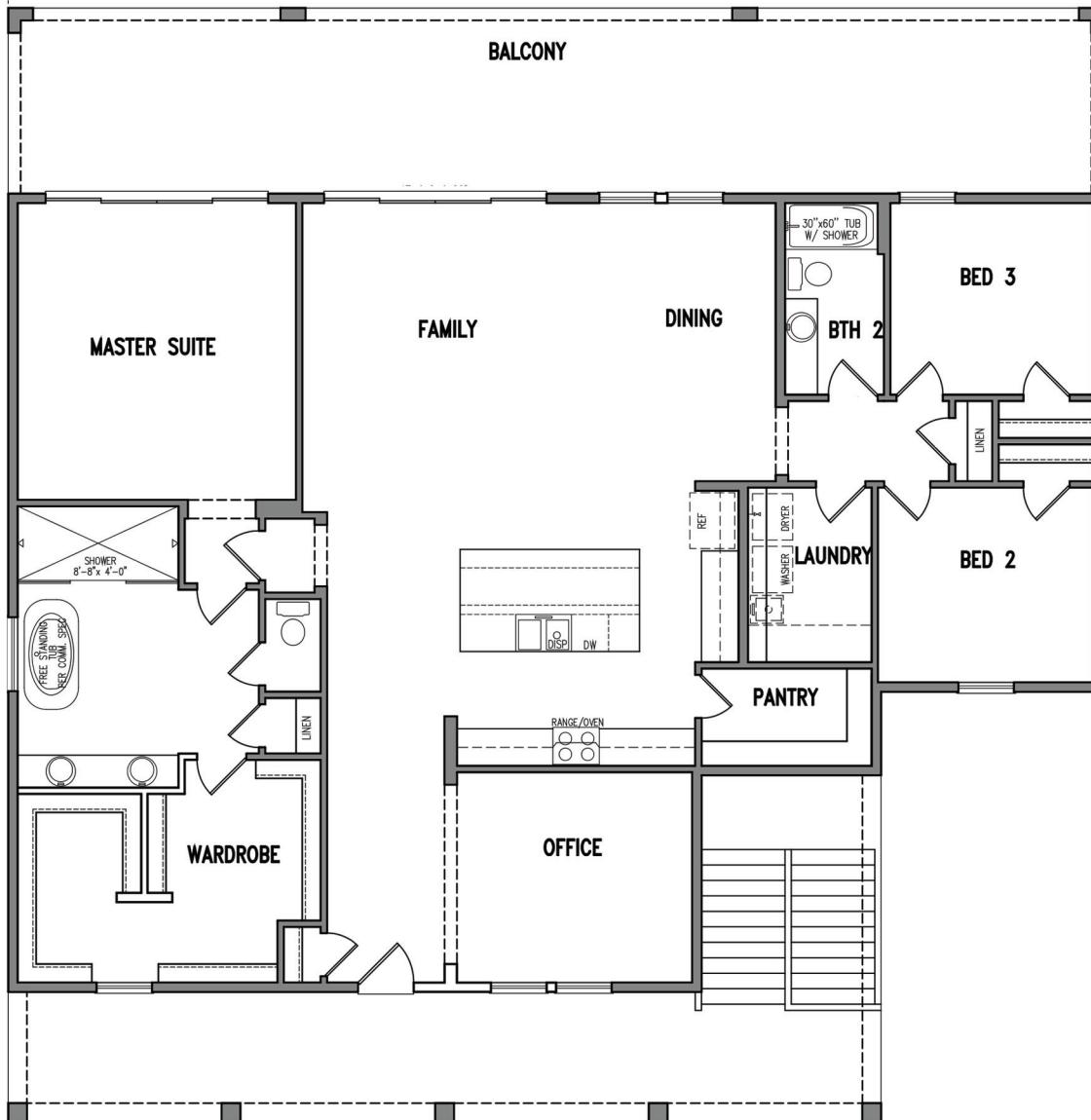


Artist's conceptual rendering. Actual construction may vary in color, features and dimensions. Availability, specifications, and pricing are subject to change without notice. All plans require municipality approval and may be modified in order to comply with all developer requirements. Please inquire with a WinWay Homes representative about custom floorplan options available on this home. © 2020 WinWay Homes. CBC #1262811. All Rights Reserved. Not an offer to purchase where prohibited by law. Broker Participation Welcome.

SABAL - 2,230 Sq.Ft



MAIN FLOOR



PLAN SQFT	
TOTAL LIVING	2,230
MAIN FLOOR	2,230
BALCONY	280
LANAI	600
SLAB	3,207